



Plan:	Sustainable Goulburn Mulwaree
Workspace:	Sustainable Goulburn Mulwaree
Administrator:	Catriona Macleod, Bob Philipson
Date range:	2015-01-01 - 2026-03-16

Last modified on: March 15th 2026

Sustainable Goulburn Mulwaree

Contents

About Us

Our Vision

Summary

Health and happiness

Equity and local economy

Culture and community

Travel and transport

Land and nature

Local and sustainable food

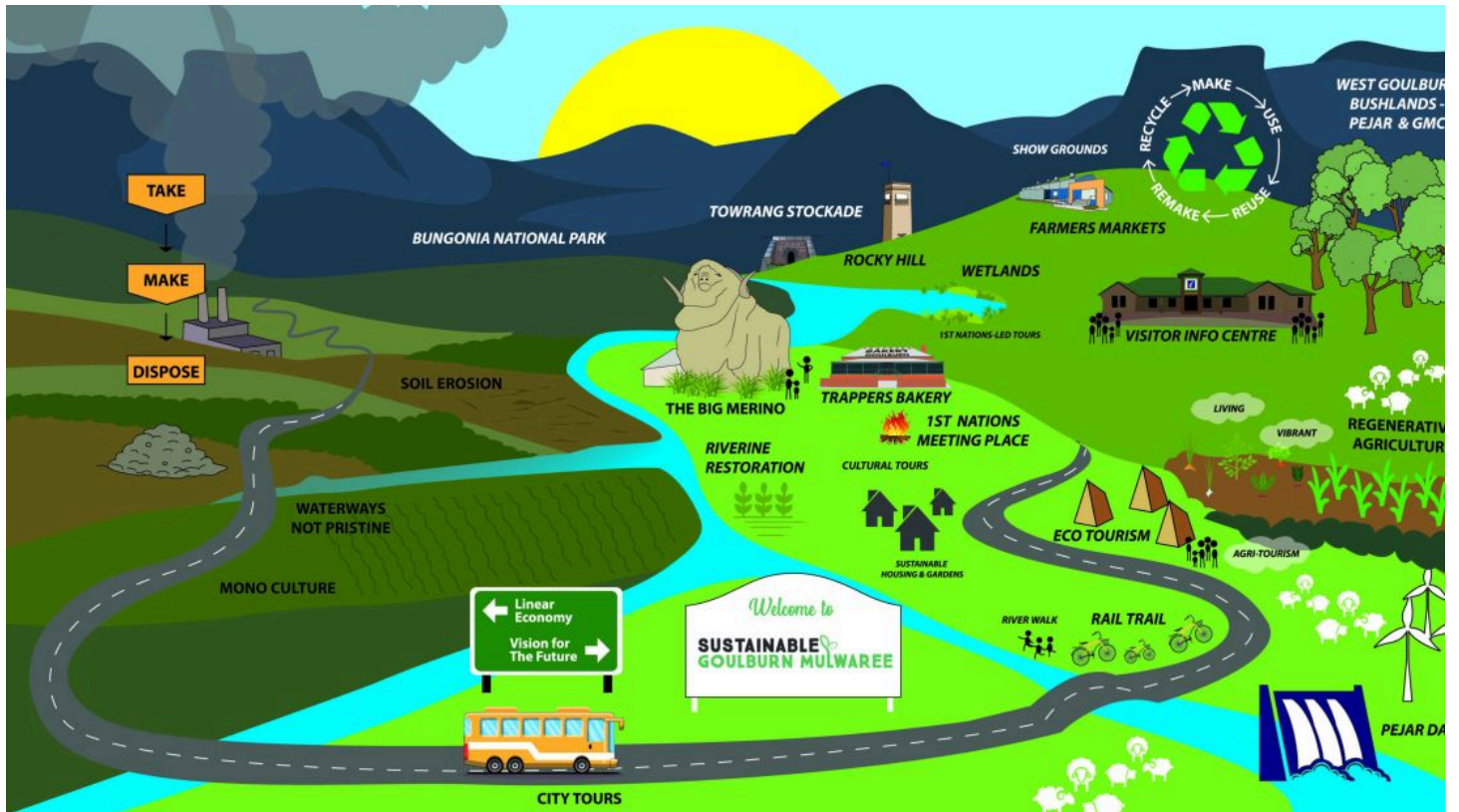
Sustainable water

Materials and products

Zero waste

Zero carbon energy

Network



About us

Our Sustainable Goulburn Mulwaree, is an urban and rural Landcare Group, that comprises a network of: community-based groups; businesses; farmer groups; environmental groups; Landcare; schools and is dedicated to building a sustainable community and economy, that values social equity and inclusion. OSGM and the Community Sustainability Hub have delivered significant outcomes in-line with the above, over the period of six years they have been functioning.

The Goulburn Mulwaree Council has a leading role to play in the Community Sustainability Hub that was formed to help in secure a sustainable future for our community and link it to others across SE NSW.

Our vision

Community and regional collaboration to secure a sustainable future for Goulburn-Mulwaree (and across SE NSW) based on ecological, economic and social health and resilience.

Summary

Health and happiness

⊙ Outcomes

Create green spaces that support mental and physical health for all ages.

Shared Outcome

Health and happiness

Global Outcome

Active, meaningful lives promoting good physical, mental and spiritual health and well-being

Model House & Household

Shared Outcome

Model retro-fitted house and sustainable Household

Equity and local economy

⊙ Outcomes

Encourage Training In Sustainable Economy and Community

Shared Outcome

Sustainable Living Diploma and Degree Course available from UTAS and Short Courses/qualifications from TAFE and www.terra.do

Equity and local economy

Global Outcome

Fairness and equity in living, working and playing, supporting local prosperity and international fair trade

Foster local pride and economic benefit through inclusive community involvement.

Shared Outcome

Increased Eco/Agri Tourism From Canberra & Sydney

Shared Outcome

Visitor Centre to promote Eco and Agri Tourism - Current promotion is inadequate

Additional Information

Current

Guidance

1. Visitor Centre to promote cultural and landmark tours
2. Trappers to promote the above, plus investment opportunities

Obtain First Nations Buy-In To Cultural/Eco Tours

Shared Outcome

Gain Agreement from First Nations Elders to Cultural and Eco Tours

Culture and community

🎯 Outcomes

Celebrate & accelerate improvement

Shared Outcome

Recognise and reward sustainability improvements across homes, businesses, and organisations.

Competitions like Lowest Emissions Household, Most Sustainable Garden, and Most Reduced Waste highlight local efforts and inspire action.

OSGM is also developing a Verified Sustainability Partner program to assess and publicly acknowledge businesses showing year-on-year improvement across emissions, waste, and community engagement.

Together, these initiatives build momentum, accountability, and pride in One Planet progress.

Guidance

house with the lowest carbon emissions house with most reduced carbon emissions house that has reduced its organic rubbish the most most sustainable garden most productive vegetable patch

Potential Sustainability Competition Categories

♻️ Carbon & Energy Efficiency

- **Lowest Household Carbon Emissions**
- **Greatest Carbon Emissions Reduction (Year-on-Year)**
- **Most Energy-Efficient Retrofit** (*e.g. best solar, insulation, appliance upgrades*)
- **Best Home Off-Grid or Low-Grid Performance** (*lowest reliance on the energy grid*)

🗑️ Waste Reduction & Circular Thinking

- **Most Reduced Organic Waste**
- **Best Composting System**
- **Most Effective Reuse & Repurposing (Furniture, Clothes, etc.)**
- **Zero Waste Household Champion**
- **Best Local Circular Economy Initiative**

🌱 Gardening & Local Food

- **Most Sustainable Garden** (*e.g. native species, low water use, habitat for pollinators*)
- **Most Productive Edible Garden or Vegetable Patch**
- **Best Shared or Community Garden Space**
- **Best First-Time Gardener Award**

💧 Water Stewardship

- **Best Rainwater Harvesting System**
- **Most Efficient Greywater Reuse System**
- **Greatest Reduction in Household Water Usage**
- **Most Innovative Water-Saving Idea**

👥 Community Leadership & Engagement

- **Most Active Neighbourhood (Collective Participation)**
- **Best Youth-led Sustainability Project**
- **Community Connector Award** (*for people bringing others into action*)
- **Most Inspiring Personal Sustainability Journey**
- **Local Business Champion for Sustainability**

💡 Innovation & Improvements

- **Most Improved Household** (*across all categories*)
- **Best DIY Sustainability Hack**
- **Most Creative Upcycling Project**
- **Innovation in Energy/Water/Waste Tech (Home-built or Installed)**

📌 Strategic Add-Ons:

- **Verified Sustainability Partner badge eligibility** for top-performing households/businesses
- Public recognition events (e.g. a Sustainability Awards Day)
- Display boards in libraries, schools, or shops to showcase winners
- QR-coded plaques or yard signs for winning gardens/homes
- "People's Choice" voting for some categories to boost engagement

- People's Choice voting for some categories to boost engagement

OSGM is also working toward a Verified Sustainability Partner program, a recognition system for businesses and organisations that demonstrate year-on-year improvement and commitment across key sustainability areas. Verified Partners will be assessed on practical criteria (e.g. emissions reduction plans, supplier engagement, community involvement) and recognised publicly for their leadership.

Connected, Caring Communities

Shared Outcome

Culture and community

Global Outcome

Respecting local identity and heritage, promoting a culture of sustainable living and creating a strong sense of community

Encourage cultural awareness, shared stories, and intergenerational learning.

Shared Outcome

First Nations Culture Acknowledged

Shared Outcome

First Nations History Established at Visitor Centre With Video

Travel and transport

⊙ Outcomes

Encourage active lifestyles and improve access to natural areas.

Shared Outcome

Travel and transport

Global Outcome

Reducing the need to travel, encouraging walking, cycling and low carbon transport

Land and nature

⦿ Outcomes

Flood/bush fire mitigation and cools the ground

Shared Outcome

Soil carbon level improved with a stimulant that will increase its moisture holding capacity, helping to mitigate flooding, bushfires and cool the ground.

Additional Information

Best Farming Systems, who are based in Goulburn Mulwaree, supply TM Agricultural. A similar product can be produced from a Johnson-Su Bioreactor,

Sources

[G-M LGA Plan](#)

Guidance

Guidance On Building Carbon Rich Soil

[[TM Agricultural Biostimulant]] (<https://bestfarmingsystems.com.au/tm-agricultural-biostimulant/>)

[[Johnson-Su Bioreactor]] (<https://www.cv-4h.org/csh-johnson-su-bioreactor-project.html>)

Healthy Land and Thriving Nature

Shared Outcome

Land and nature

Global Outcome

Protecting and restoring land for the benefit of people and wildlife

Mycorrhizal Fungi Patches Est Across G-M LGA

Shared Outcome

Key metrics of Mycorrhizal Fungi Patches est. across LGA recorded and maintained

Additional Information

Guidance On Building MF Patches

<https://www.cv-4h.org/csh-johnson-su-bioreactor-project.html>

Sources

[G-M LGA Plan](#)

Guidance

Guidance On Building MF Patches

[[https://www.cv-4h.org/chtttpswwwcv-4horgcsh-mycorrhizal-fungi.html\(url\)](https://www.cv-4h.org/chtttpswwwcv-4horgcsh-mycorrhizal-fungi.html(url))]

Restore biodiversity and improve urban ecology through native revegetation.

Shared Outcome

I Indicators

Increase the amount of water in the soil

Shared Indicator

Increased Levels Of Carbon In MF Patches

Shared Indicator

Additional Information

Awaiting advice from Chris White.

Local and sustainable food

🎯 Outcomes

Local and sustainable food

Global Outcome

Regenerative, humane farming and healthy diets high in local, seasonal, organic food and plant protein

Project Created To Expand Adoption of Regenerative Agriculture

Shared Outcome

Regen Ag Farmer and Farmer Support Groups Formed

Support local food security through Sustainable Farming & Permaculture In Gardens and Market Gardens

Shared Outcome

Adoption of Regenerative Farming (meat) and Permaculture for Home and Market Gardens

📊 Indicators

Regan Ag Farmland Doubled by 2030

Shared Indicator

Working with and Funding to Double Area Of Regenerative Farm Landland

Target LGA production of sustainable Food

Shared Indicator

Sustainable water

⊙ Outcomes

Improve water resilience and reduce pressure on stormwater infrastructure.

Shared Outcome

Water and oceans

Global Outcome

Using water wisely, protecting freshwater and marine resources and reducing impacts of flood and drought

Materials and products

⊙ Outcomes

Materials and products

Global Outcome

Materials from sustainable sources and promoting products and services to help people reduce consumption.

Producing Johnson-Su compost

Shared Outcome

Build domestic and commercial bioreactors and sell soil inoculant

Zero waste

⊙ Outcomes

A Sustainable Local Economy

Shared Outcome

Minimise waste and promote sustainable thinking in planting and maintenance.

Shared Outcome

Zero waste

Global Outcome

Reducing consumption, re-using and recycling for zero waste and zero pollution

Zero carbon energy

⊙ Outcomes

A Resilient, Low-Carbon Region

Shared Outcome

The Goulburn Solar Farm&Battery Now Makes a Contribution to lowering Emissions

Sequester carbon and reduce local heat island effects through canopy growth.

Shared Outcome

Zero carbon energy

Global Outcome

Using energy efficiently and supplying all energy with renewables

+ Network

Goulburn Mulwaree Community Sustainability Hub

Organisation

<https://1drv.ms/i/c/90ac5f319d2d2069/IQDvfoa5oq3kSJErshbMpAn2ASbUilU9kLQH5-MPe1NDsGQ?e=jPNVWv>

The G-M/SE NSW CSH is an organisational construct that guides the direction of its members to build a sustainable community and economy

Geo Location

Goulburn
Goulburn NSW, Australia

The concept of the CSH came into being some six years ago as a method of bringing the G-M community and neighbouring collaborating groups together. It is now seen as a way of networking communities together across SE NSW and potentially beyond.